

à la cart Baggage Cart Operations & Parts Manual

Maintenance Schedule



Keith Consolidated Industries
www.kcigse.com

541-830-8678
1718 Antelope Rd.
White City, OR 97502

•Table of Contents•

Overview.....	2
Specifications.....	3
Features.....	4
Operations.....	5
Preventative Maintenance / How to Order Replacement Parts.....	6-7
Parts Breakdown.....	8-12
Electrical Schematic.....	13
Warranty Information.....	14

• Overview •



The á la cart Baggage Cart is attractive, sturdy and functional. Shelves are luggage friendly and protect bags from rain and snow. The aluminum structure is corrosion resistant and will stay looking superior for years without rusting or needing painting. Wheels are industrial-duty polyurethane filled tires, chosen for maximum mobility under load, even when conditions are snowy or icy. Components are replaceable rather than the cart being disposable.

• Specifications •



• *à la cart* Baggage Cart Specifications •

Weight: 425 pounds

Height: 84 inches

Width: 36 inches

Top Shelf: 120 inches x 36 inches

Bottom Shelf: 120 inches x 36 inches

Overall Length: 133 inches (Including Push/Brake Handle)

• Features •

• *à la cart Baggage Cart Features* •

- Low rolling resistance design for easy maneuvering (One person can easily handle a fully loaded cart).
- Quick-change foam filled tires.
- Rain and snow protection for bags.
- No maintenance design.
- In service across North America.

• *à la cart Baggage Cart Safety Features* •

- Stable in winds up to 70 mph.
- Reflective markers at corners.
- “Drop lock” disc brakes eliminate problems that conventional friction brakes have with brake wear, under inflated tires and poor weather.

• *à la cart Baggage Cart Materials* •

- 5052 & 6061 series aluminum.
- Polyurethane filled tires.
- Optional LED lighting available.

• *Comprehensive Two Year Warranty* •

- KCI Inc. warrants the DXR Cart to be free from manufacturing or material defects for two years from date of invoice.
- Damage caused by vandalism or abuse is not covered by this warranty.

• Operations •

• *Warnings and Cautions* •

- Do not climb on or stand on the roof.
- Do not overload the roof shelf.
- Never park the DXR Cart where high wind or jet blast are present, damage could occur.
- Do not exceed maximum capacity of 1000 lbs.
- Keep roof baggage within cart perimeter to protect against contacting the aircraft.
- Do not allow the DXR cart to contact the aircraft.
- Do not tow the DXR cart.

• *Operation* •

- Usual loading and unloading is from the left-hand side. (Push Handle is located at the rear of cart).
- Move the cart by pulling down on the Push Handle to release the brake.

• *Feedback* •

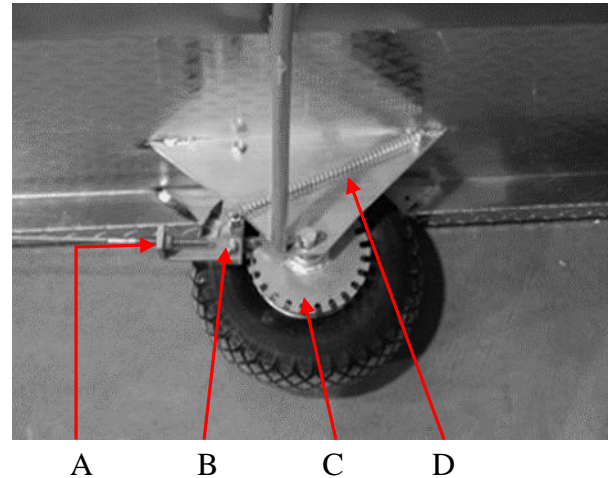
At KCI Inc., we wish to provide safe, high quality, and easy to use products. Customer satisfaction is of great importance to us. To continue our tradition of quality and response to customer needs, we welcome any comments or suggestions.

Call (541) 830-8678 or visit our website at www.kcigse.com.

• Operations •

• *Annual Brake Inspection and Service* •

1. Place á la Cart on its side.
2. Inspect the brake springs (D). If damaged or broken, replace immediately.
3. Have assistant lower the push handle to release the brakes.
4. Brake lever link (B) should clear the sprocket (C) by 1/8" to 3/8" when brakes are released.
5. Have assistant release the brake handle, the brake lever link (B) should touch the bottom of the sprocket notch on (C).



• *Brake Spring Replacement* •

1. Remove the old brake spring (D) by removing the nut and bolt that secure the spring at each end.
2. Install the new spring by attaching one end and securing it with the original nut and bolt. Using vice-grips or pliers stretch the spring and attach using remaining nut and bolt.
3. Tighten the “Nylock” nuts until the bolt engages the nylon.

Do not tighten the nut against the spring.

• *Brake Cable Adjustment* •

1. Loosen the two lock nuts (A) using 9/16" wrenches.
2. Adjust the nuts at (A) until the following is achieved:
 - a) Brake lever link (B) clears the sprocket (C) by 1/8" to 3/8" when the brakes are released.
 - b) Brake lever link (B) touches the bottom of the sprocket notch on (C).

• *Test the Brakes* •

Upon completion of any wheel or brake adjustment, test the brakes to verify proper operation.

1. Push the á la Cart slowly and release the brake handle, the cart should stop immediately.

• Preventative Maintenance Checklist •

The following is a general maintenance checklist which covers the major components of your á la cart Baggage Cart. It is recommended that the following be checked regularly as scheduled to ensure proper function, longevity, and serviceability of your á la cart Baggage Cart.

COMPONENT	SUGGESTED ACTION	SCHEDULE		
		Monthly	Quarterly	Bi-Annually
WHEELS	Grease wheels			
BRAKES	General Check			

• How to Order Replacement Parts •

Please have model number and serial number available when ordering replacement parts

When ordering replacement parts:

- Contact the KCI parts dept. at (541) 830-4877 or email msankey@kci.nu
- Give the Model Number, Serial Number, and Mfg. Date) to the parts representative.
- If possible, give the part number and a description from the parts list. Or describe the needed part(s) to the best of your ability.
- If you are in a breakdown situation, please tell us, we will try to get your unit operational as soon as possible.



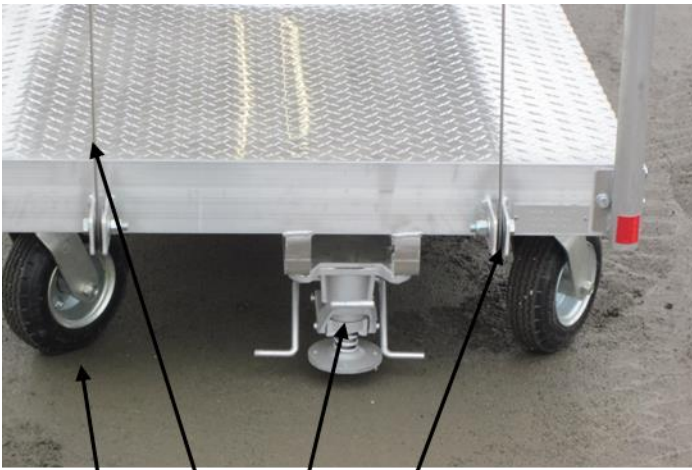
Serial Number
(The ID Plate is located on the frame.)



Mfg. Date
(You may be asked the Mfg. Date of your unit, have it ready if you are asked for it)



• Parts Breakdown •



1

2

3

4



5



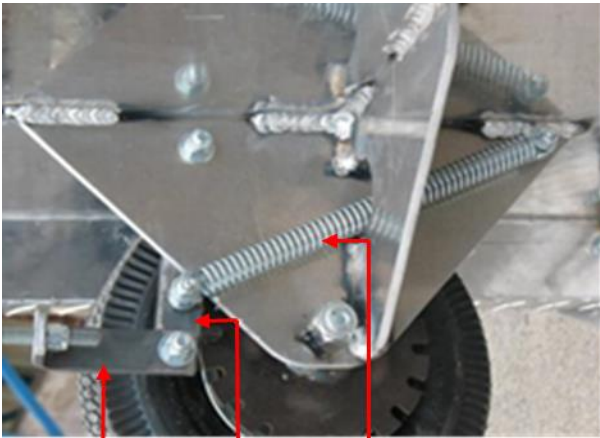
6

7

8

<i>Item</i>	<i>Description</i>	<i>Part Number</i>
1	8" Swivel Wheel	P00082
2	Brake Cable Assy.	ALC-BC94
3	Foot Lock	P00230
4	Brake Cable Pulley	P00129
5	Brake Cable Bushing	ALC-BB0175
6	Brake Handle	K00703
7	Battery Enclosure	ALC-BE0418
8	Baton Holder	ALC-BH0610

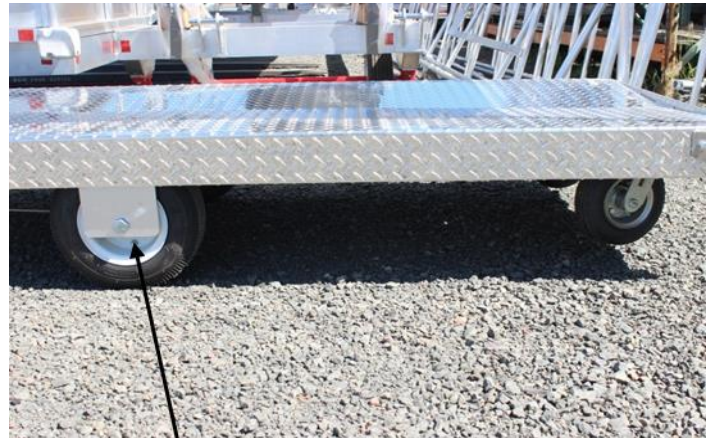
• Parts Breakdown •



9

10

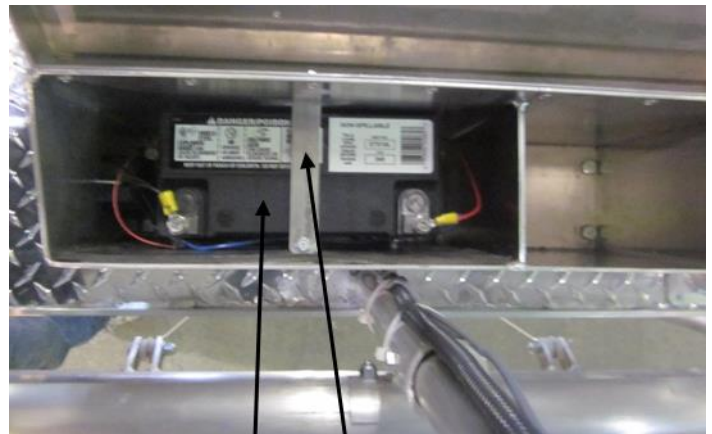
11



12



13



14

15

<i>Item</i>	<i>Description</i>	<i>Part Number</i>
9	Brake Lever Link	K00368
10	Brake Bar (Left Side)	K00367
10A	Brake Bar (Right Side)	K00366
11	Brake Spring	P00131
12	12" Wheel Assy.	ALC-MWA12
13	Timer Switch	P00362
14	Battery	CYL10018
15	Battery Keeper	ALC-BK01

• Parts Breakdown •



16



17



18

19

<i>Item</i>	<i>Description</i>	<i>Part Number</i>
16	Solar Charger	P00305
17	Solar Panel	P00306
18	Top Shelf	K00698
19	Bottom Shelf	K00699

• Parts Breakdown •



20

21

22

23

24

25

26

27



<i>Item</i>	<i>Description</i>	<i>Part Number</i>
20	Solar Panel Mounting Frame	ALC-MB24
21	Canopy Frame	K00702
22	Canopy Cover	ALC-CCA120
23	LED Light Strip	P00345
24	Blue Handle Cover, Push-Station	ALC-HC3767
25	Black Bumper	P00375
26	Push Station Assembly	K00856
27	Strut, Push-Station	P00376

• Parts Breakdown •

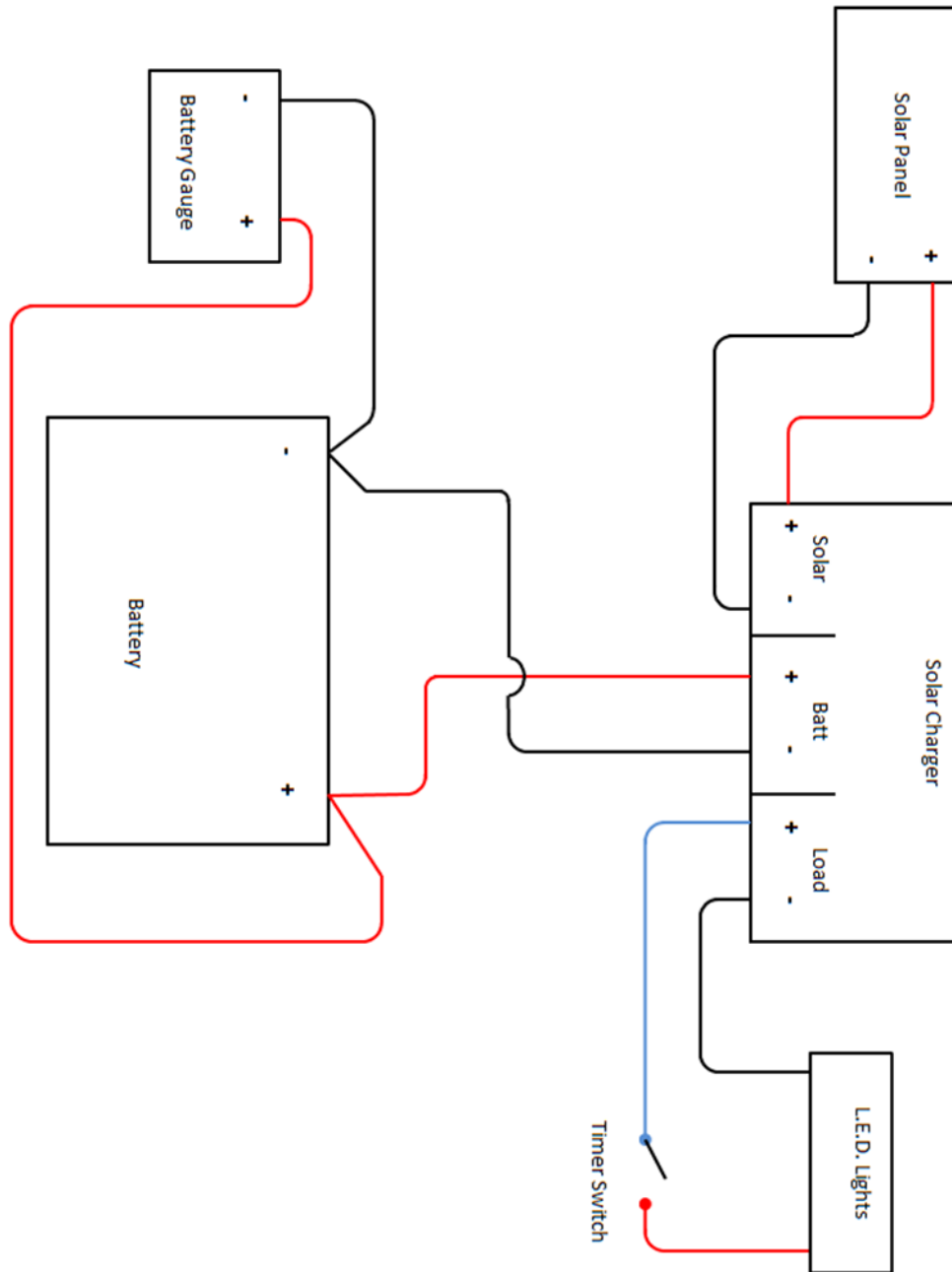


28

29, 29A

<i>Item</i>	<i>Description</i>	<i>Part Number</i>
28	Swivel Castor, Rubber on Cast Iron	P00365
29	12" Castor, Rubber on Cast Iron	P00366
29A	12" Castor, Rubber on Cast Iron w/ Brake Sprocket	P00366A

- Electrical Schematic •



• Warranty Information •

This warranty is in lieu of all other warranties, either expressed or implied.

What is Covered:

This warranty covers equipment manufactured by KCI, Inc. from any defects in materials, workmanship and/or installations performed.

Period of Coverage:

This warranty lasts for a period of two years, electrical component coverage is for one year from the date the product ships, or until the original ownership of the ramp is transferred to another party, whichever comes first. Any repairs or modifications without the express written consent of KCI, Inc. will be grounds to immediately void all or part of this warranty.

What is Not Covered:

This warranty does not cover the following:

1. Accidental damage.
2. Misuse or abuse.
3. Damage caused by adverse weather, disasters, or other forces of nature.
4. Worn out adhesive skid walk.
5. Worn out tires/wheels.
6. Worn out/faded canvas canopies.
7. Any other wear or damage caused by the belt loaders's general use.
8. Any consequential or incidental damages to include:
 - a. Any loss of profit.
 - b. Loss by reason of airport or flight line shutdown.
 - c. Non-operation or increased expense of operation.
 - d. Loss of passengers or business.

What KCI Will Do:

Repair or replace any original part, component or piece of equipment that is found to have defects from time of shipment through the end of the period of coverage.

How to Make a Service Claim:

Provide a claim in writing within the period of coverage to the address listed below or email to msankey@kci.nu. We will then determine if the problem is a defect with the product. Once the nature of the problem is ascertained, we will notify the buyer of our planned resolution. This may include an on-site visit by KCI, Inc. for repairs, or that the buyer ships the defective part or component to us for inspection and replacement at KCI's expense.

KCI GSE Inc.
1718 Antelope Road
White City, Oregon 97503